

FLOOR PLANS CAPACITY CHARTS

THE WESTIN
PORTLAND



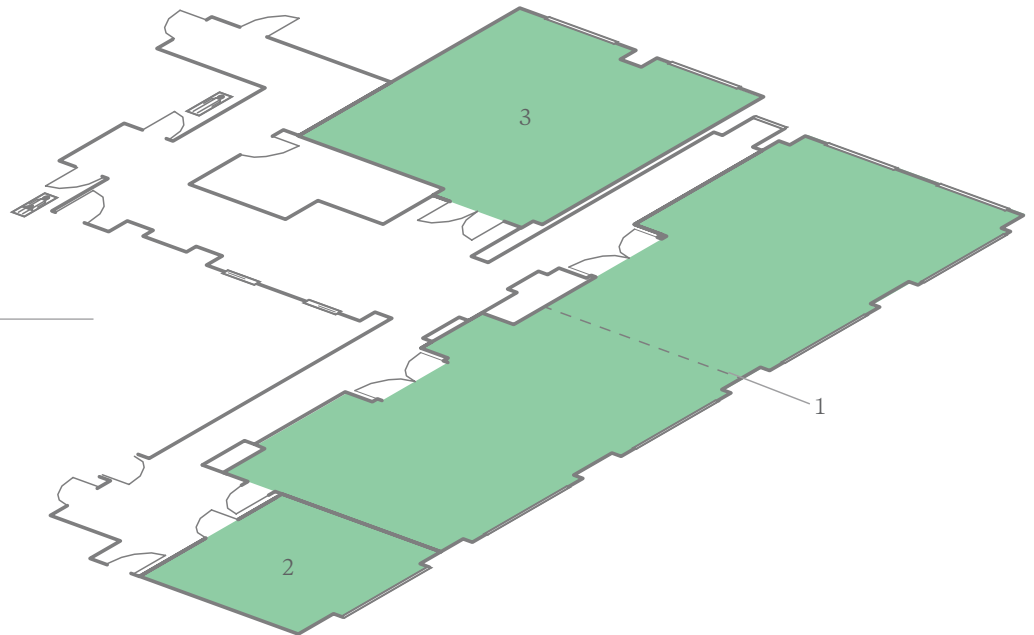
MEETING SPACE OVERVIEW

750 Southwest Alder Street
Portland, Oregon 97205
T 503.294.9000 F 503.241.9565
E westinportland@starwoodhotels.com
westinportland.com

THE WESTIN
PORTLAND

SECOND FLOOR

1. ALDER BALLROOM
2. BOARDROOM
3. PARK ROOM



ROOMS AT A GLANCE

TOTAL GUEST ROOMS	205
TOTAL MEETING ROOMS	5
LARGEST MEETING ROOM CAPACITY	132
LARGEST MEETING ROOM SIZE	119 m ² / 1,282 ft ²

Additional spaces for meetings and events, not displayed here, may also be available. Contact your hotel representative for more information.

This document contains approximate measurements and square footage that are for illustrative purposes only. We cannot guarantee the floor plan accuracy or completeness, therefore encourage you to review the space to make sure it is suitable for your event.

MEETING SPACE SECOND FLOOR

750 Southwest Alder Street
Portland, Oregon 97205
T 503.294.9000 F 503.241.9565
E westinportland@starwoodhotels.com
westinportland.com

THE WESTIN
PORTLAND



	DIMENSIONS	AREA (SQ. FT.)	MAX CEILING HEIGHT	THEATER	CLASSROOM	BANQUET	CONFERENCE	U-SHAPE	HOLLOW SQ.	RECEPTION
■ ALDER BALLROOM	24' X 53'	1,252	12'	120	80	100	56	48	60	120
■ ALDER EAST	24' X 27'	650	12'	60	40	50	28	24	30	60
■ ALDER WEST	24' X 26'	624	12'	60	36	40	28	24	30	60
■ BOARDROOM	19' X 12'	228	12'	—	—	—	10	—	—	20
■ PARK ROOM	21' X 27'	550	12'	50	30	40	22	20	26	50

This document contains approximate measurements and square footage that are for illustrative purposes only. We cannot guarantee the floor plan accuracy or completeness, therefore encourage you to review the space to make sure it is suitable for your event.



750 Southwest Alder Street
Portland, Oregon 97205
T 503.294.9000 F 503.241.9565
E westinportland@starwoodhotels.com
westinportland.com

THE WESTIN
PORTLAND